



GLOBE SYSTEMS

2globes SPECLIST HEADSET & DONGLE

2024

2globes.com



2globes WIRELESS HEADSET SERIES

REVOLUTIONARY

2globes presents the innovative headset that combines DECT and Bluetooth technologies into a single Headset. Our headset is crafted to provide maximum flexibility and quality, ensuring full mobility not only in the office but also at home and everywhere in between. With the stereo version equipped with Hybrid-ANC (Active Noise Cancellation), this headset marks a milestone in audio technology. It represents the ultimate solution for those seeking an all-in-one headset that delivers uncompromising performance and convenience. Choose the 2globes headset and experience a whole new standard in sound quality and functionality.

HIGHLIGHTED FEATURES

- Wireless DECT and Bluetooth within the Headset!
- Advanced Hybrid-ANC (4 mics. solution)
- Up to 20 hours of talk time and 100 hours of standby time
- Busylight located on the microphone arm
- On-ear and over-ear cushions available
- Supports Super Wide Band (CELT48)
- Supports ENC (Environmental Noise Cancellation)
- Charging at the base station and via USB-C cable
- DECT Level C security
- Base station interface: DHS, RJ9, RJ12, RJ45, USB
- Fully integrated headset and base station in 2globes.com VoIP multi-cell and dual-cell systems

"Unparalleled clear sound and seamless integration. Redefine your communication."

UNIQUE DESIGN

The design of the headset is unique and includes a headset boom arm with a multicolor LED for call status indication. The cushions can be replaced, and both on-ear and over-ear cushions are available. The sound setting automatically adjusts to the selected cushion on the ANC headset. "Unmatched clear sound and seamless integration. Redefine your communication."

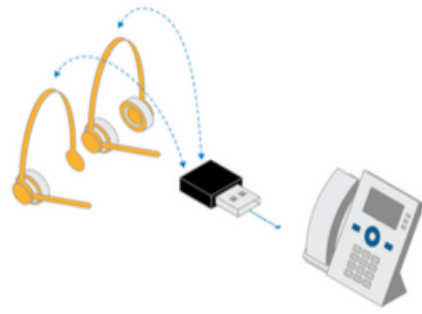
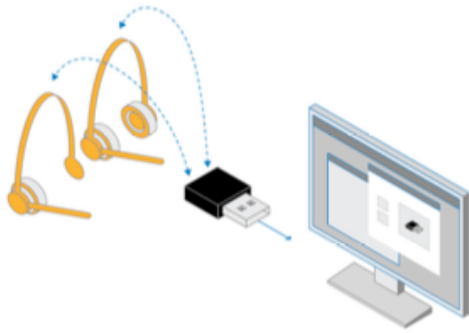


MONO, STEREO HEADSET

The headset series is available in two variants: mono and stereo ANC. The Hybrid-ANC (Active Noise Cancellation) performance of the Stereo ANC Headset is superior. Coupled with 2globes's advanced ENC (Environmental Noise Cancellation) solution to suppress unwanted environmental noise for microphone input, the overall perceived audio experience will be extraordinary for the user.

COMPLEMENTS WITH 2globes3741 DECT-DONGLE

To maximize the efficiency and flexibility of your 2globes headset, we introduce the DECT dongle. No matter where your work takes you, this dongle ensures you're always connected. Many types of office tasks can be performed anywhere, as long as you have a reliable and flexible communication solution. The 2globes3741 DECT dongle is designed to operate in perfect harmony with your 2globes headset, offering a seamless connection between different communication devices.



WHEN RELIABLE AND FLEXIBLE CONNECTION IS ESSENTIAL

DECT DONGLE

Many types of office work can be performed anywhere, as long as you have a reliable and flexible communication solution that allows you to seamlessly connect with colleagues, customers, suppliers, etc. - whether you're in the office, at home, or on the go. At 2globes, we design and develop wireless IP telephony products and subsystems used in communication systems for professional use.

The 2globes3741 DECT dongle seamlessly connects various types of communication devices - it can serve both as a stationary DECT base connecting a 2globes DECT headset and, for example, a PC or a desk phone, as well as a portable 2globes DECT handset connecting a desk phone with 2globes VoIP infrastructure. The dongle is a USB type A dongle with a slide switch, enabling quick switching between stationary and portable modes.

USER SCENARIOS

In addition to providing an end-to-end communication solution, the 2globes3741 DECT dongle offers two additional user possibilities: DECT dongle on PC, DECT dongle on wired phone (stationary part). - each offering a different system depending on the user scenario.



DECT-DONGLE ON DESK PHONE

You can connect the DECT dongle to a desk phone (with a USB port), and it serves as a base for a DECT headset. The headset is registered by setting both the dongle and the headset in registration mode.

You can select the active audio device (headset) on the desk phone, which requires desk phone support - we provide a USB HID interface. All calls are made from the desk phone, and you can mute/unmute the microphone on the headset itself.



DECT-DONGLE ON PC

You can connect the DECT dongle to a laptop/PC, and it serves as a base with call control for a DECT headset. Registering the headset is done by setting both the dongle and headset to registration mode. You can select the active audio device (headset) via a Windows/MacOS PC. All calls are made from the PC using, for example, MS Teams, and you can mute/unmute the microphone on the PC or the headset itself.

Technical Specifications

Features (Dongle)	Specs (Dongle)
Dimensions	35mm (L) x 19mm (W)
DECT	1880 - 1895 MHz (Taiwan)
	1880 - 1900 MHz (EMEA)
	1910 - 1920 MHz (Brazil & Uruguay)
	1910 - 1930 MHz (LATAM, Argentina, Chile)
	1920 - 1930 MHz (USA, Canada)
AUDIO	Codecs: "G726, BV16, G722, BV32, CELT 128 kbit/s"
LED indicator	Three LEDs
Hardware features	Button for registration and reset
	Slider to switch between FP and PP mode
Call Features	Features: "Call waiting, hold/resume"
Headset support	Supported Headsets: "RTX7251, RTX7252, RTX7254"
Conference support	Supports up to 4 users
Custom logo	Silkscreen printing
Call indicator LED on dongle	Call waiting indicator: Yes
DECT connection status LED on dongle	DECT connection status: Yes
Configurable	Configurable: "Yes, via PC tool"
Firmware update support	Firmware update support: "Yes, via PC tool"
USB connector	Connector type: Type A
PC Windows support	PC Windows support: Yes
MacOS support	MacOS support: Yes
DECT audio support	Wideband audio: "CELT, G.722, BV32"
	Narrowband audio: "G.726, BV16"
Call Client Support	Supported call clients: Microsoft Teams: Yes, Microsoft Skype for Business: Yes
	Adaptive power control: Yes
Adaptive power control (DECT)	Ja
Weight	236 gram

Features (Headset)	Specs (Headset)
2globes Hybrid	
Frequency Band	1880 - 1930 MHz (varies by region)
Output Power	21-24 dBm (varies by region)
Sensitivity	-92 dBm
Antenna	2 for rapid antenna diversity
Maximum Range	200m outdoors
Security	Class C
Encryption	AES256
AUDIO	
Narrowband Audio	G.726, BV16
Wideband Audio (HD)	G.722, BV32
Hardware Features	
Battery	Lithium Polymer (replaceable)
Battery Capacity	600 mA
Microphones	2 for voice (ENC) and 4 for ANC
Headset Interface	USB-A for base connection, USB C headset interface
Operating Conditions	0°C to 45°C
BATTERY PERFORMANCE (Headset)	
Talk Time (DECT)	Up to 20 hours
Talk Time (BT)	Up to 10 hours
Standby Time (DECT only)	Up to 100 hours standby
Charging Time (0% - 90%)	3 hours
CALL FUNCTIONS	
Call Waiting	Yes
Hold / Retrieve	Yes
Supports 2 simultaneous calls (only one on hold)	Yes
Call Conference	Yes
Call Swap	Yes
BLUETOOTH (Headset)	
Pairing	4
BT Version	4.2 Classic
Sensitivity	Better than -92 dBm @ DH1
Output Power	Class 2. 2.5mW (4dBm)